

LEGEND

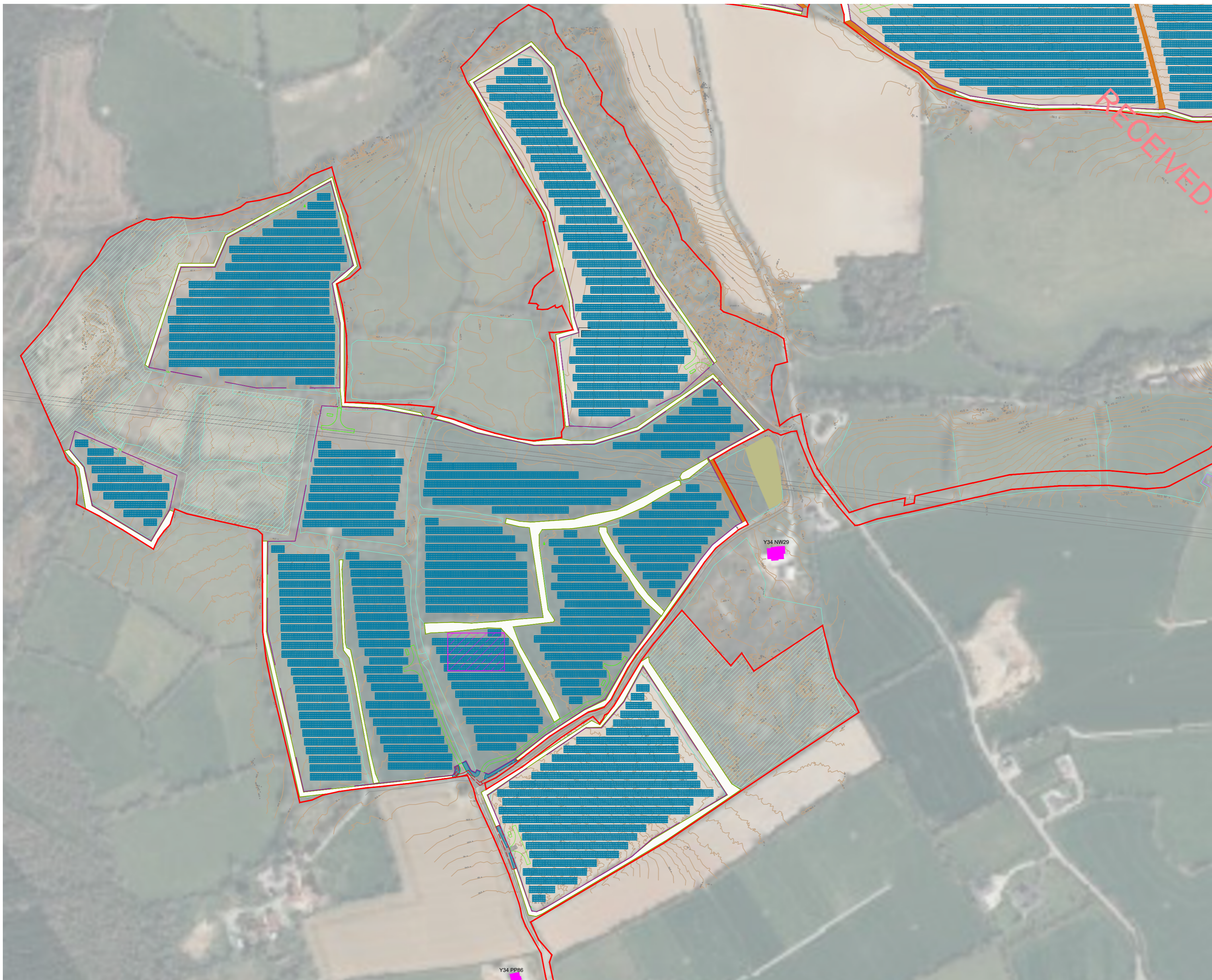
- Existing tree group & woodland to be retained
- Areas for biodiversity conservation and enhancement
- Existing hedgerow to be retained: see Dr-0706 for details.
- Existing hedgerow to be reinforced: see DR-702 and Dr-0703 for details.
- Existing garden vegetation to be retained
- Existing hedgerow to be replanted: see DR-700 and Dr-0701 for details.
- Existing hedgerow to be removed
- Proposed hedgerow
- Proposed mitigation planting: Woodland
- Proposed mitigation planting: Low Scrub Woodland see DR-705 for details.
- House/Dwelling
- Outhouse
- Proposed security fence

This drawing is the copyright of ait urbanism + landscape. Unless otherwise stated all dimensions are in millimetres. Where dimensions are not given, drawings must not be scaled and the matter must be referred to the Landscape Architect. If the drawing includes conflicting details/dimensions the matter must be referred to the Landscape Architect. All dimensions must be checked on site. The Landscape Architect must be informed, by the Contractor, of any discrepancies before work proceeds.

DATE	REV.	DESCRIPTION	DRAWN BY	CHECKED BY
-	-	-	-	-

NOTES:
 Copyright : All creative artwork, landscape symbology, text, legends, specifications, descriptions and illustrations used in our drawings and reports are the intellectual property of ait urbanism + landscape ltd. and are not to be reproduced by others.

	3rd Floor Newmarket House Newmarket Square, Dublin 9 Ireland T + 353 86 173952 www.aitplan.ie	ISSUE STATUS: PLANNING	REVISION: -
	CLIENT: Gen7 Renewable Energy Ltd.	DRAWING NO.: 25WX01-DR-010	
PROJECT: Shelburne Energy Farm	DRAWN BY: GB, DM&D	1st ISSUE: 15.08.2025	NORTH
DRAWING: Mitigation Plans - Section A	PROJECT NO.: 25WX01	SCALE: 1:2000	SHEET SIZE: A2 CHECKED BY: DM&D



LEGEND

- Existing tree group & woodland to be retained
- Areas for biodiversity conservation and enhancement
- Existing hedgerow to be retained: see Dr-0706 for details.
- Existing hedgerow to be reinforced: see DR-702 and Dr-0703 for details.
- Existing garden vegetation to be retained
- Existing hedgerow to be replanted: see DR-700 and Dr-0701 for details.
- Existing hedgerow to be removed
- Proposed hedgerow
- Proposed mitigation planting: Woodland
- Proposed mitigation planting: Low Scrub Woodland see DR-705 for details.
- House/Dwelling
- Outhouse
- Proposed security fence

RECEIVED: 13/04/2026

This drawing is the copyright of **ait urbanism + landscape**. Unless otherwise stated all dimensions are in millimetres. Where dimensions are not given, drawings must not be scaled and the matter must be referred to the Landscape Architect. If the drawing includes conflicting details/dimensions the matter must be referred to the Landscape Architect. All dimensions must be checked on site. The Landscape Architect must be informed, by the Contractor, of any discrepancies before work proceeds.

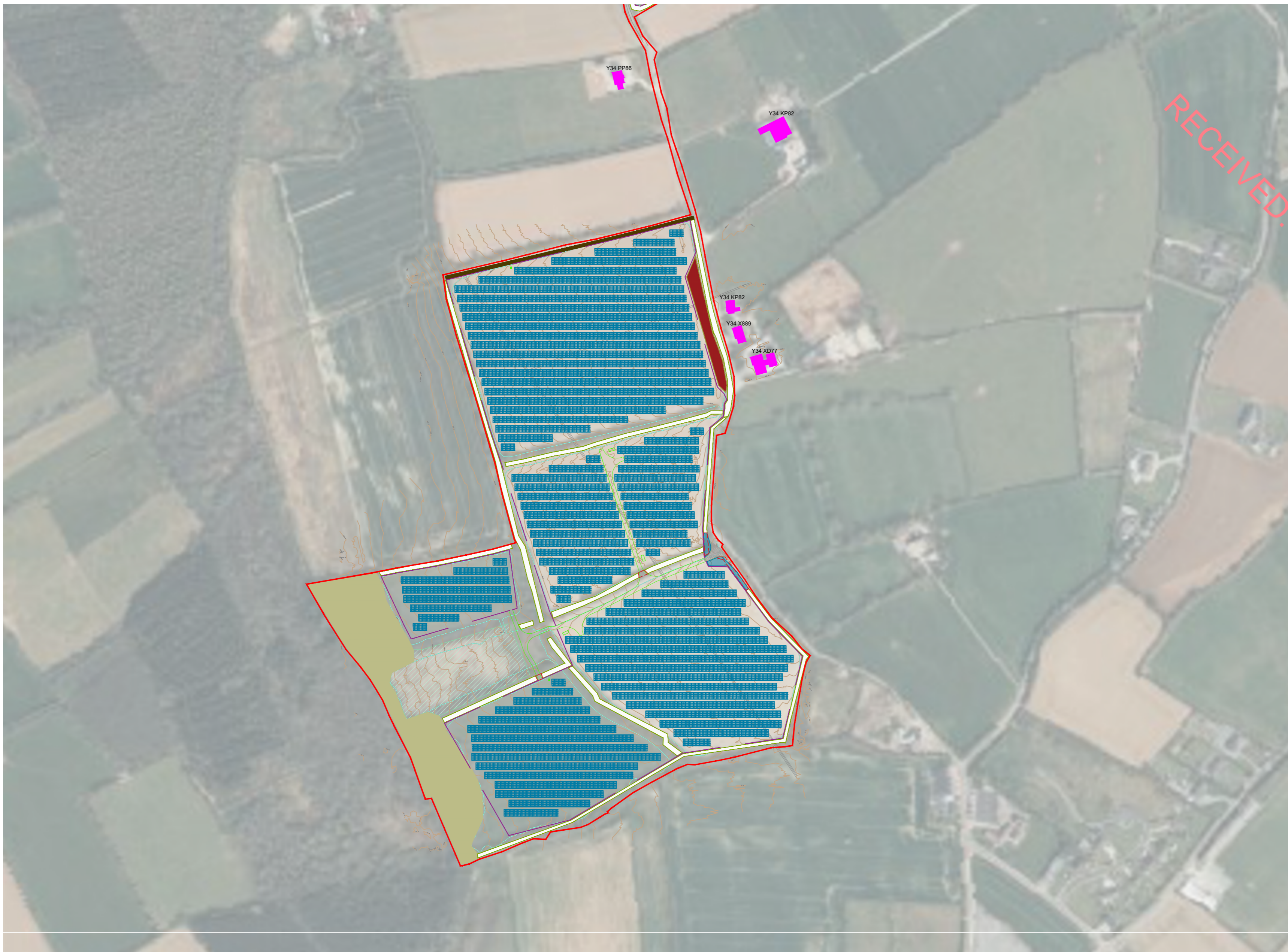
DATE	REV.	DESCRIPTION	DRAWN BY	CHECKED BY
-	-	-	-	-

NOTES:

Copyright : All creative artwork, landscape symbology, text, legends, specifications, descriptions and illustrations used in our drawings and reports are the intellectual property of **ait urbanism + landscape ltd.** and are not to be reproduced by others.

	3rd Floor Newmarket House Newmarket Square, Dublin 9 Ireland T + 353 86 173502 www.aitplace.ie		ISSUE STATUS: PLANNING	REVISION: -	
	CLIENT: Gen7 Renewable Energy Ltd.		DRAWING NO.: 25WX01-DR-0102		
PROJECT: Shelburne Energy Farm		DRAWN BY: GB, DMxGD	1st ISSUE: 15.08.2025	NORTH	
DRAWING: Mitigation Plans - Section B		PROJECT NO.: 25WX01	SCALE: 1:2000	SHEET SIZE: A2	CHECKED BY: DMxGD

Copyright : All creative artwork, landscape symbology, text, legends, specifications, descriptions and illustrations used in our drawings and reports are the intellectual property of **ait** urbanism + landscape ltd. and are not to be reproduced by others.



RECEIVED: 13/04/2026

LEGEND

- Existing tree group & woodland to be retained
- Areas for biodiversity conservation and enhancement
- Existing hedgerow to be retained: see Dr-0706 for details.
- Existing hedgerow to be reinforced: see DR-702 and Dr-0702 for details.
- Existing garden vegetation to be retained
- Existing hedgerow to be replanted: see DR-700 and Dr-0701 for details.
- Existing hedgerow to be removed
- Proposed hedgerow
- Proposed mitigation planting: Woodland
- Proposed mitigation planting: Low Scrub Woodland see DR-705 for details.
- House/Dwelling
- Outhouse
- Proposed security fence

This drawing is the copyright of **ait** urbanism + landscape. Unless otherwise stated all dimensions are in millimetres. Where dimensions are not given, drawings must not be scaled and the details/dimensions the matter must be referred to the Landscape Architect. All dimensions must be checked on site. The Landscape Architect must be informed, by the Contractor, of any discrepancies before work proceeds.

DATE	REV.	DESCRIPTION	DRAWN BY	CHECKED BY
-	-	-	-	-

NOTES:

	3rd Floor Newmarket House, Newmarket Square, Dublin 9 Ireland t + 353 86 1736922 www.aitplc.ie	ISSUE STATUS:	REVISION:
	PLANNING	DRAWING NO: 25WX01-DR-0103	
CLIENT:	Gen7 Renewable Energy Ltd.	DRAWN BY: GB, DM&D	1st ISSUE: 15.08.2025
PROJECT:	Shelburne Energy Farm	PROJECT NO: 25WX01	SCALE: 1:2000
DRAWING:	Mitigation Plans - Section C	SHEET SIZE: A2	CHECKED BY: DM&D